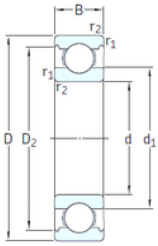




JAPAN IMPORTED BEARINGS CO., LTD



VA201



2Z/VA201



2Z/VA208



2Z/VA228

40 mm x 90 mm x 23 mm SKF 6308/VA201
deep groove ball bearings

Bearing No. 6308/VA201

6308/VA201 Bearing 2D drawings and 3D CAD models

Size	40x90x23 mm
Bore Diameter	40 mm
Outer Diameter	90 mm
Width	23 mm
d	40 mm
D	90 mm
B	23 mm
C	23 mm
d1	56,1 mm
r1 min.	1,5 mm
r2 min.	1,5 mm
D2	77,7 mm
Weight	0,63 Kg
Temperature -	30 to +250 °
Basic static load rating (C0)	24 kN
Category	Single Row Ball Bearings
Inventory	0.0
Manufacturer Name	SKF
Minimum Buy Quantity	N/A
Weight / Kilogram	0.635
Product Group	B00308
Enclosure	Open
Precision Class	ABEC 1 ISO P0
Maximum Capacity / Filling Slot	No
Rolling Element	Ball Bearing



JAPAN IMPORTED BEARINGS CO., LTD

Snap Ring	No
Internal Special Features	Polyalkylene Glycol/Graphite Mixture Filled
Cage Material	Steel
Internal Clearance	C0-Medium
Inch - Metric	Metric
Long Description	40MM Bore; 90MM Outside Diameter; 23MM Outer Race Width; Open; Ball Bearing; ABEC 1 ISO P0; No Filling Slot; No Snap Ring; Polyalkylene Glycol/Graphite Mixture Filled Internal Special Features; C0-M
Other Features	Deep Groove Extreme Temperature Variant
Category	Single Row Ball Bearing
UNSPSC	31171504
Harmonized Tariff Code	8482.10.50.68
Noun	Bearing
Keyword String	Ball
Manufacturer URL	http://www.skf.com
Weight / LBS	1.411
Bore	1.575 Inch 40 Millimeter
Inner Race Width	0 Inch 0 Millimeter
Outer Race Width	0.906 Inch 23 Millimeter
Outside Diameter	3.543 Inch 90 Millimeter
d ₁	56.11 mm
D ₂	77.7 mm
r _{1,2} min.	1.5 mm
d _a min.	49 mm
D _a max.	81 mm
r _a max.	1.5 mm
Basic dynamic load rating C	42.3 kN



JAPAN IMPORTED BEARINGS CO., LTD

Basic static load rating C_0	24 kN
Limiting speed	130 r/min
Limiting temperature T max.	250 ° C
Mass bearing	0.63 kg